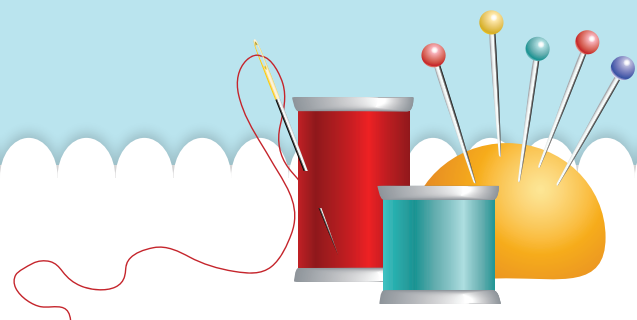


Stitches of Love



LOVE TO SEW PILLOW PDF DOWNLOADABLE PATTERN

stitchesoflovequilting.com
Copyright 2020





LOVE TO SEW PILLOW QUILT INSTRUCTIONS

See the video tutorial from the Stitches of Love Love to Sew Sulky Webinar to walk you through each step of this pattern. Extra tips are included in the webinar!

CUTTING INSTRUCTIONS

White with Red Swiss Dots Fabric

1. Cut one 9" by WOF Strip. Subcut one 9" by 22" rectangle for applique background.
2. Cut two 2.25" by WOF Strips. Subcut each strip into one 2.25" by 10" rectangle and one 2.25" by 26" rectangle for outer border.
3. Cut one 15" by WOF Strip. Subcut into two 15" by 17" rectangles for pillow back.

Red Fabric

1. Cut two 1.5" by WOF Strips. Subcut each strip into one 1.5" by 8" rectangle and one 1.5" by 22.5" rectangle for inner border.

Red and White Striped Fabric

1. Cut four 2.5" by WOF Strips for binding.

PILLOW FRONT APPLIQUE INSTRUCTIONS

1. Using the reversed applique pieces provided in this pattern, trace each applique piece onto your fusible of choice. Group pieces by color when tracing and make sure to mark the number on each piece.
2. Loosely cut around your traced applique pieces and iron your fusible onto the fabrics of your choice.
3. Cut out each applique piece.
4. Gather your white with red swiss dots 9" by 22" rectangle background fabric.
5. Using the Applique Placement Guide, a light box and an applique pressing sheet, arrange your applique pieces on your 9" by 22" background fabric. Iron in place. *NOTE* You may find it easier to create applique units before ironing directly onto your background fabric.
6. Buttonhole stitch your applique pieces. Straight stitch your accent lines.
7. Trim applique background to 8" by 20.5".

PILLOW FRONT ASSEMBLY INSTRUCTIONS

1. Gather two red 1.5" by 8" rectangles.
2. Sew one red 1.5" by 8" rectangle to the left side of your applique background with a 0.25" seam. Press seam towards red rectangle.
3. Sew one red 1.5" by 8" rectangle to the right side of your applique background with a 0.25" seam. Press seam towards red rectangle.
4. Gather two red 1.5" by 22.5" rectangles.
5. Sew one red 1.5" by 22.5" rectangle to the top of your applique background with a 0.25" seam. Press seam towards red rectangle.
6. Sew one red 1.5" by 22.5" rectangle to the bottom of your applique background with a 0.25" seam. Press seam towards red rectangle.
7. Gather two white with red swiss dots 2.25" by 10" rectangles.
8. Sew one white with red swiss dots 2.25" by 10" rectangle to the left side of your applique

- background with a 0.25" seam. Press seam towards white with red swiss dots rectangle.
9. Sew one white with red swiss dots 2.25" by 10" rectangle to the right side of your applique background with a 0.25" seam. Press seam towards white with red swiss dots rectangle.
 10. Gather two white with red swiss dots 2.25" by 26" rectangles.
 11. Sew one white with red swiss dots 2.25" by 26" rectangle to the top of your applique background with a 0.25" seam. Press seam towards white with red swiss dots rectangle.
 12. Sew one white with red swiss dots 2.25" by 29.5" rectangle to the bottom of your applique background with a 0.25" seam. Press seam towards white with red swiss dots rectangle.
 13. Sew Yellow Ric Rac to the left and right sides of your pillow top.
 14. Sew Yellow Ric Rac to the top and bottom of your pillow top.

PILLOW FINISHING INSTRUCTIONS

1. Gather your pillow top and two white with red swiss dots 17" by 15" rectangles. Quilt as desired.
2. Trim both white with red swiss dots, quilted 17" by 15" rectangles to 16" by 13.5".
3. Attach binding to one 13.5" edge on both white with red swiss dots, quilted rectangles.
4. Place your quilted pillow top right side down in front of you.
5. Place one white with red swiss dots, quilted 16" by 13.5" rectangle right side up on the wrong side of your pillow top so that the raw edges line up with the top, right edge and bottom of your pillow top.
6. Place the remaining white with red swiss dots, quilted 16" by 13.5" rectangle right side up on the wrong side of your pillow top so that the raw edges line up with the top, left edge and bottom of your pillow top.

PILLOW FORM INSTRUCTIONS

1. Gather two 26" by 13.5" pieces of muslin or plain white fabric.
2. Place the two muslin squares right sides together. Stitch a 1/4" seam on all four sides making sure to leave an opening so you can easily stuff your form.
3. Turn form right side out and stuff your form to your desired fullness.
4. Hand stitch the opening on your form closed. Your form is now ready for use in your Love to Sew Pillow!

Did you enjoy this Love to Sew Webinar and Pillow? Great!

We invite you to visit stitchesoflovequilting.com and join one of our many Club or Block of the Month Programs! You'll receive a lovely box in the mail each month with all the materials you need to create another special project. Plus, you'll have video tutorials for every project so you can continue to grow and master your skills!

Happy Stitching,

Julie and Brittany

The Mother Daughter Duo of Stitches of Love Quilting

PS Please visit our social media channels for additional picture and video tips on a variety of projects!

stitchesoflovequilting.com

facebook.com/stitchesoflove

instagram.com/stitchesoflove

youtube.com/c/stitchesoflove

MATERIALS NEEDED

Pre-Fused, Laser Cut Applique Pieces

1 Yard White with Red Swiss Dots Fabric

1/4 Yard Red Fabric

1/3 Yard Red and White Striped Fabric

2 1/4 Yards Yellow Ric Rac

1 Yard Yellow Measuring Tape Ribbon

4 Buttons for Embellishment

Batting

1/2 Yard Fabric for Pillow Form

Stuffing for Pillow Form

30 wt Sulky Thread for Machine Applique

50 wt Sulky Thread for Machine Applique (Bobbin) and Sewing

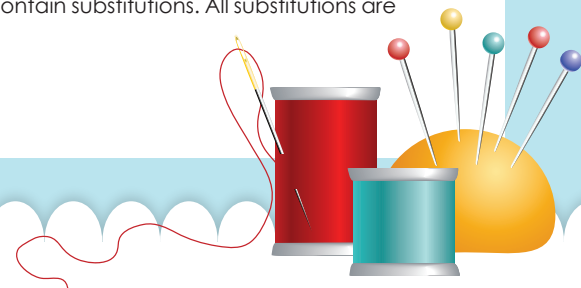
Applique Pressing Sheet

Light Box

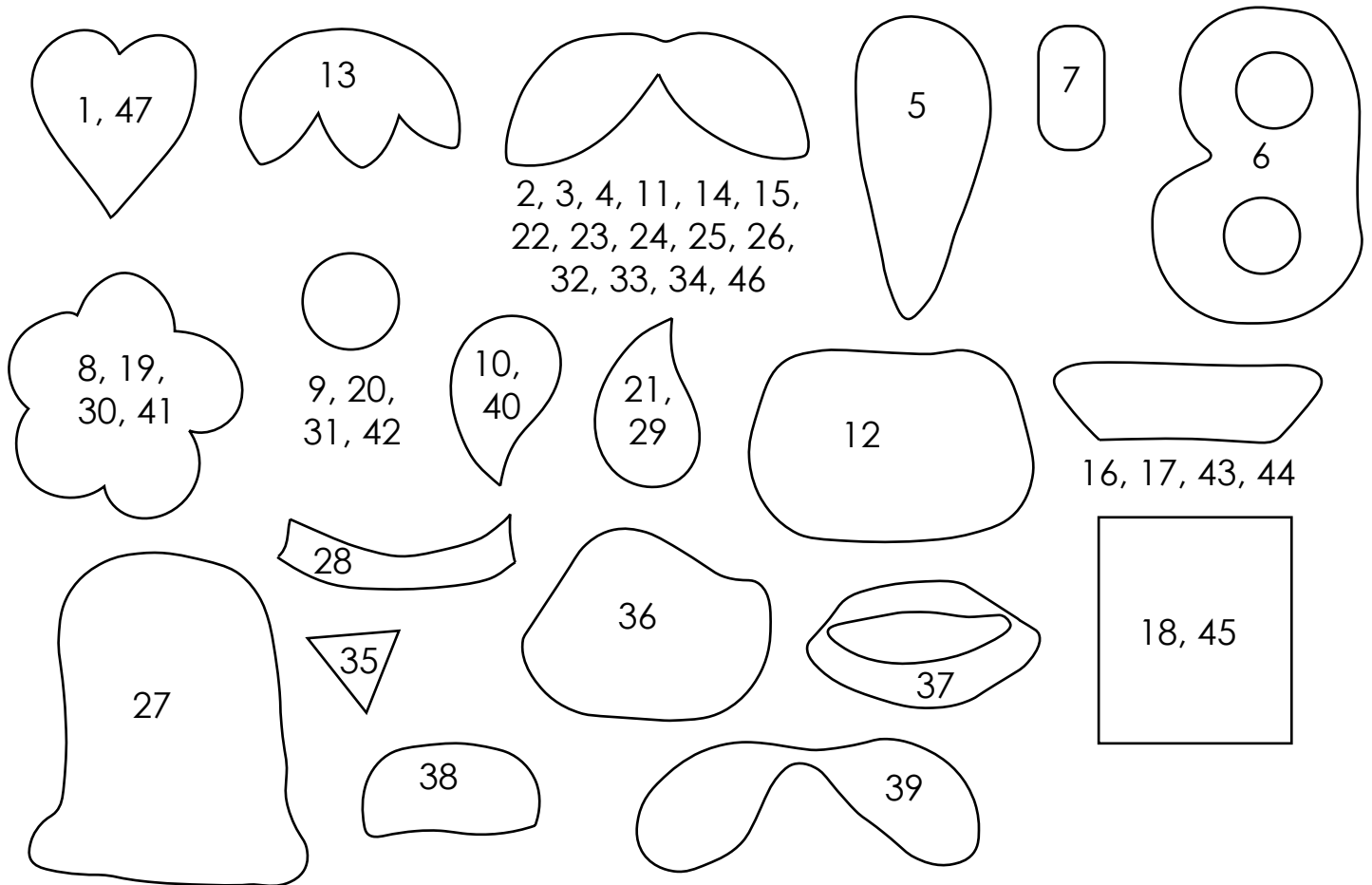
Finished Pillow Measures Approximately 26" by 13.5"



All rights reserved. No part of this work may be used in any form or reproduced by any means - graphic, digital, electronic or mechanical, including photocopying, electronic cutting and lasering. Kit may contain substitutions. All substitutions are picked out by the designer to maintain kit quality.



Love to Sew Applique Pieces
Reversed for Easy Tracing onto Fusible of your Choice



Trim Line 8" Tall by 20.5" Wide

